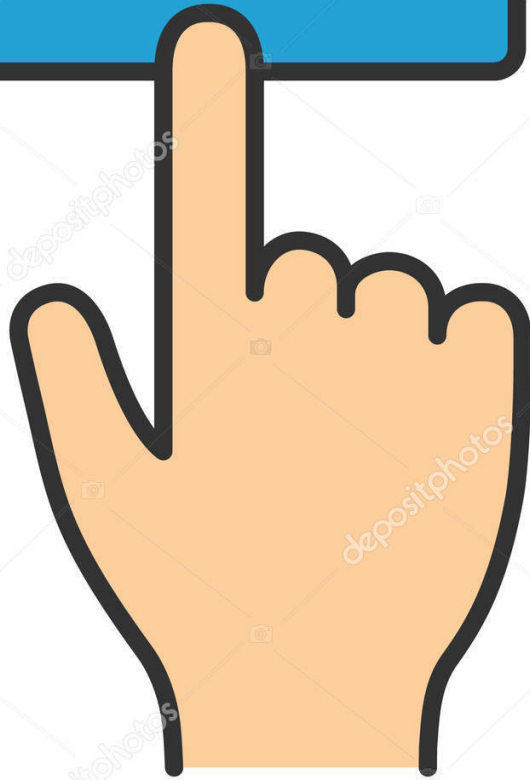

Download



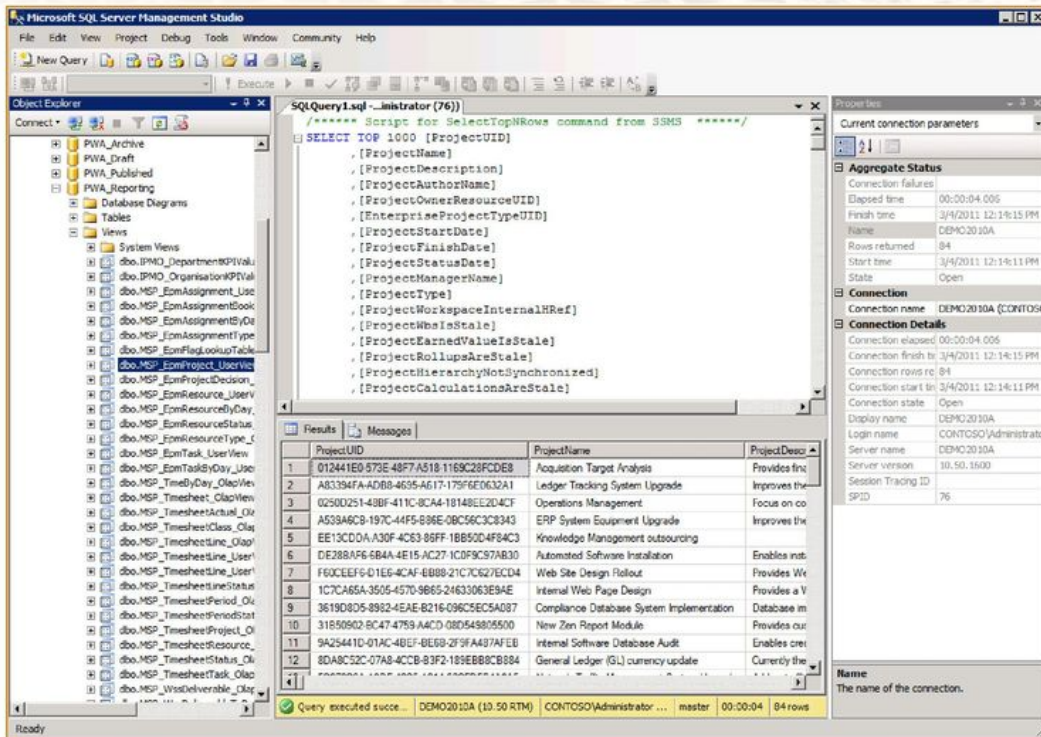
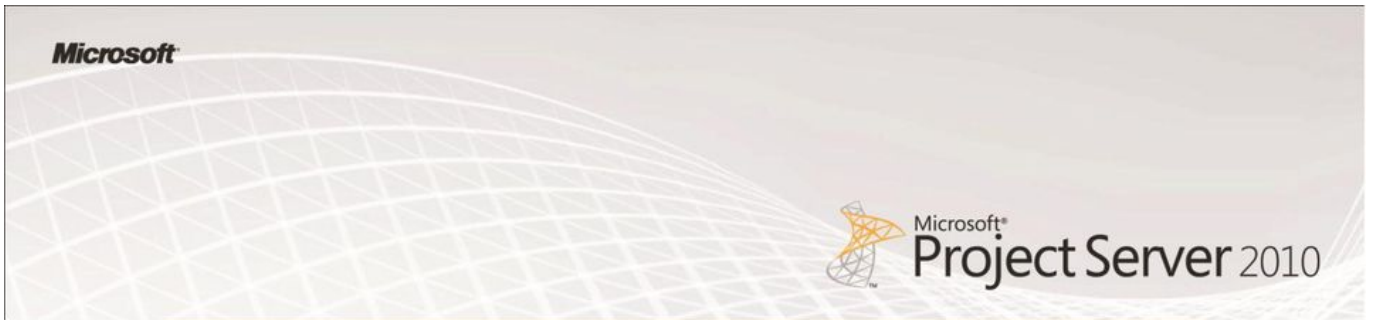


Figure 4: Navigating the Project Server Database

Note that almost all of the custom fields appear in the View tables indicated with the “userview” suffix. Multi-value fields do not appear in those tables, and as a result, multi-value fields are often much more difficult to incorporate in standard reporting tools than the more traditional single-value fields as they require personnel with experience writing SQL queries to export to various reporting tools. Organizations should be mindful of this fact when defining the enterprise custom fields to be used within the system.

Tips and Tricks: Reporting Against the Database

It is sometimes challenging for report authors to determine in which table a specific field is located. The online database schema referenced above provides information on how to find fields. Users may also refer to this helpful field finder tool developed by Treb Gatte of Microsoft Project Experts: http://reportmode.com/psrdb_reference.

Download



d9dee69ac8